

## **DriveAlarm Help Index**

About DriveAlarm

[What is DriveAlarm?](#)

[What is E-mailware ?](#)

[Product Support](#)

Uninstalling/Upgrading DriveAlarm

[Uninstalling DriveAlarm](#)

[Upgrading DriveAlarm](#)

DriveAlarm's Interface

[The Drive List](#)

[The Drive Information Box](#)

[The Buttons](#)

Configuring DriveAlarm

[Setting Display Options](#)

[Setting Alarm Levels](#)

## **What is DriveAlarm ? (About DriveAlarm)**

DriveAlarm is new utility from ChilLiSoft® Products.

DriveAlarm monitors the drives connected to your system, keeping track of the available free space on each drive. This can include floppy drives, CD-Rom drives and network drives.

DriveAlarm can be configured to warn you when the space on a drive drops below a user defined level.

DriveAlarm is transparent in use and displays its icon within the taskbar notification area to avoid cluttering up the taskbar.

### **See also**

[What is E-mailware ?](#)  
[Product Support](#)

### **What is E-mailware ? (About DriveAlarm)**

E-mailware is an approach to distributing software that falls somewhere between shareware and freeware. Like shareware it requires registration but, like freeware, it's FREE.

To register just send me an e-mail at [dgo@easynet.co.uk](mailto:dgo@easynet.co.uk) and tell me what version number you are using.

### **See also**

[What is DriveAlarm ?](#)

[Product Support](#)

## **Product Support (About DriveAlarm)**

Product support is given on the following basis:

you e-mail your queries/bugs/suggestions and I will attempt to solve the problems in the next version of DriveAlarm.

### **See also**

[What is DriveAlarm ?](#)

[What is E-mailware ?](#)

## **Uninstalling DriveAlarm**

When you installed DriveAlarm you will have noted that there are only three files involved in the installation and running of DriveAlarm. These are:

drivealarm.txt  
drivealarm.exe  
drivealarm.hlp

To uninstall DriveAlarm therefore you should simply delete these three files from the folder in which you installed them, together with any shortcuts that you created, say for instance in your StartUp folder.

### **See also**

[Upgrading DriveAlarm](#)

## **Upgrading DriveAlarm**

When you first installed DriveAlarm, you will have noted that there are only three files involved in the installation and running of DriveAlarm. These are:

drivealarm.txt  
drivealarm.exe  
drivealarm.hlp

To upgrade DriveAlarm therefore you should simply copy the new copies of these three files into the same folder in which you have currently installed DriveAlarm. NB before you can copy the DriveAlarm.exe file you will need to make sure that DriveAlarm is not running or else Windows 95 will not let you overwrite the file.

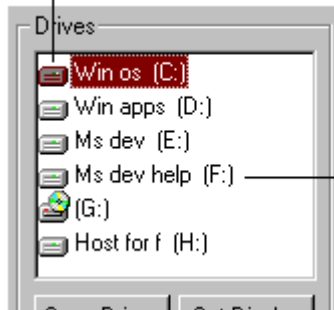
### **See also**

[Uninstalling DriveAlarm](#)

## **The Drive List (DriveAlarm's Interface)**

The drive list provides the following information:

The drive type. For information on the various drive types which DriveAlarm can monitor see [setting display options](#)



The drive volume name and logical drive letter

### **See also**

[The Drive Information Box](#)

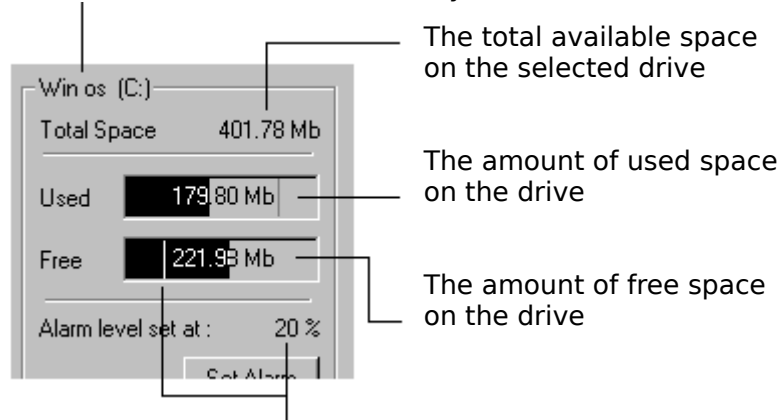
[The Buttons](#)

[Setting Display Options](#)

## **The Drive Information Box (DriveAlarm's Interface)**

The drive information box provides the following information:

The volume name of the currently selected drive



The current alarm level on the drive. For more information see [setting alarm levels](#)

### **See also**

[The Drive List](#)

[The Buttons](#)

[Setting Alarm Levels](#)

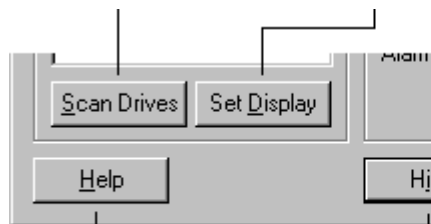


## **The Buttons (DriveAlarm's Interface)**

Click this button to force DriveAlarm to update the drive list after you have removed or changed a floppy disk or CD , or after you have disconnected from a network drive.

Click this button to set which drive you want DriveAlarm to show in the drive list. See [setting display options](#) for more information.

Click this button to set the alarm level for a drive. For more information see [setting alarm levels](#). NB This button is currently only enabled for Local fixed drives.



Click this button to display the help contents page.

Click this button to hide DriveAlarm. To display DriveAlarm again double click or right click on DriveAlarm's icon in the taskbar notification area at the right end of the taskbar.

Click this button to terminate DriveAlarm. Selecting this option will stop DriveAlarm from monitoring your drives.

### **See also**

[The Drive List](#)

[The Drive Information Box](#)

[Setting Alarm Levels](#)

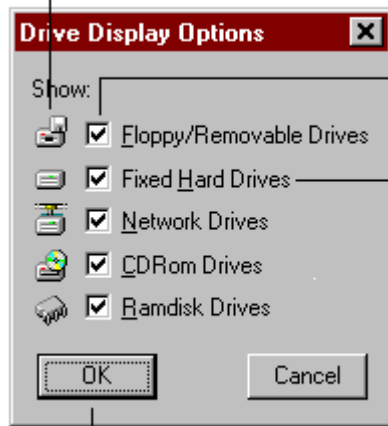
[Setting Display Options](#)

## **Setting Display Options**

Click the Set Display button to set the drive types that you wish DriveAlarm to show in the drive list.

The following dialog box is displayed:

These icons correspond to those in the [drive list](#)



Click the check boxes beside each of the drive types to select the drive types which you want DriveAlarm to display in the drive list.

NB if you deselect local fixed drives you will not be able to [set alarm levels](#).

Click the OK button to accept any changes you have made. DriveAlarm will update the display to reflect your choice.

### **See also**

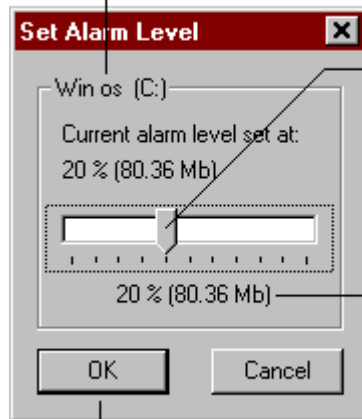
[The Drive List](#)

## **Setting Alarm Levels**

Click the Set Alarm button to (re)set the alarm level on the currently selected drive.

The following dialog box is displayed:

The currently selected drive



Drag the slider to set the point at which you want DriveAlarm to notify you of reducing disk space on the drive.

This readout will change to show the alarm level represented by the slider position.

Click the OK button to accept any changes you have made. DriveAlarm will update the display to reflect your choice.

The maximum possible level of warning is fixed at 50% of the total space on the drive. The figure in itself is arbitrary, but I wanted a cutoff to avoid the possibility of setting silly alarm levels.

To turn off the alarm on any drive, set the warning level to 0%.

### **See also**

[The Drive Information Box](#)

